

Digital Full Colour Production Presses

Ricoh Pro™ C9200 Series Graphic Arts Edition

Printer

RICOH
imagine. change.



Ricoh Pro
C9210

135
ppm
Black & white
Full colour

Ricoh Pro
C9200

115
ppm
Black & white
Full colour

The digital printer that thinks it's an offset printer

In a busy production environment, a versatile and productive platform can be the difference between success and failure. The Ricoh Pro™ C9200 and Ricoh Pro™ C9210 are the definitive answers you were looking for to secure efficiency and quality for your production.

These two models are able to print onto a wide variety of media and the new sheetfed presses produce print of astonishing quality at speed. Bridging the gap between offset and digital processes, they enable Print Service Providers to manufacture high quality digital print collateral more quickly and more affordably.



Ricoh Pro C9200 Series Graphic Arts Edition

Exceptional print quality, exceptionally consistent

The Ricoh Pro C9200 and Ricoh Pro C9210 production printers offer outstanding image quality. Both models produce repeatable colour output with a look and feel that is comparable to offset. They also bring innovative new features, such as an Auto Colour Diagnosis unit, which will support stability and productivity by checking for colour inconsistencies between the digital image and the printed sheet and will adjust tone fluctuations if required.

The wide colour gamut provided by the new ultra-fine PXP chemical toner combined with VCSEL technology (Vertical Cavity Surface Emitting Lasers) enables printers to produce vivid lifelike colours with smooth tonal gradation.

- Print quality that is comparable to offset.
- Vivid lifelike colours, smooth tonal gradation and fine lines.
- Low toner pile height minimises glossiness.



Speed and reliability that is taking productivity to the next level

There may be a deadline approaching but with the Ricoh Pro C9200 and Ricoh Pro C9210 it won't be a problem. Fast and robust, both models are designed to meet demanding mid to heavy duty print requirements. They print virtually non-stop; the highly efficient engine of the Ricoh Pro C9200 delivers immaculate colour print at a speed of up to 115 pages per minute, while the Ricoh Pro C9210 offers a speed of up to 115/135 pages per minute. These presses will easily handle up to one million A4 impressions a month.

Over a five year life, the Ricoh Pro C9200 and Pro C9210 can print 60 million impressions and achieve a duty cycle (peak volume rating) of 1.75 million impressions a month. To enhance reliability, they have an extended paper path with wide radius turns and, to reduce service downtime, trained operators can replace key service units.

- 60 million impressions over a five year life.
- Duty cycle (peak volume rating) of 1.75 million impressions a month.
- Up to one million A4 impressions per month at a speed of up to 115/135 ppm.
- There is no need to stop: paper and toner can be replenished on the fly.
- Full engine speed maintained at all paper weights.



Prints beautifully on a dazzling variety of media



Extensive media support

The Ricoh Pro C9200 and Ricoh Pro C9210 are the most versatile heavy duty sheetfed production systems you can encounter. They allow media weights from 52gsm to 470gsm operating at full rated speed and will print onto a wide variety of stock, including gloss and matt coated media, textured card and carbonless paper.

Further expanding the range of potential applications, the new production printers also support duplex printing on SRA3 paper and long sheet stock up to 1030mm and 1260mm in simplex. The on-board media library, which contains automated settings for a variety of branded media types, simplifies set up and ensures reliable performance.

- Support media weights of 52gsm to 470gsm.
- Gloss and matt coated media, textured card and carbonless paper.
- Extensive on-board media library contains settings for a variety of branded media.
- New media management tool (MMT) allows settings to be shared between devices.
- Elastic fusing belt ensures toner adherence to textured media.

A totally bespoke printing solution

Tailored to your production needs with enhanced capability

To secure reliable round-the-clock performance the Ricoh Pro C9200 and Pro C9210 presses can be tailored to meet almost all production needs with additional inline feed and finishing options. Optional vacuum feed LCTs support a broad range of media, including 470gsm coated SRA3 stock.

The finishing options include a staple finisher, a booklet maker and trimmer unit, a multifolding unit that supports six fold patterns, a high capacity interposer, a GBC StreamPunch, inline ring and perfect binding systems, twin high capacity stackers and a variety of professional Plockmatic booklet making systems.

The enhanced finishing and feeding options allow you to handle more variety of booklet applications.

- A New inline finishing systems are capable of 30 sheet booklets including coated media covers.
- A New Plockmatic booklet maker allows you to produce A4 landscape booklets up to 50 sheets.

EFI Digital Front Ends

To support clients with existing Fiery workflows, powerful EFI print servers are available.

Based on the new Fiery FS350 Pro system software, the E-86 and E-46 lever the latest Fiery technology enhancements to deliver a fast performance and outstanding colour out of the box.



TotalFlow Print Server

The TotalFlow Print Server offers an Adobe PDF Print Engine (APPE) based Digital Front End perfect for commercial print environments or corporate print room handling either PDF or IPDS / AFP data streams (option).

Clients can connect to existing pre-press workflows (Kodak Prinergy, Agfa Apogee and Heidelberg Prinect) using industry standard JDF technology enabling seamless integration and bi directional feedback on job status. The choice of Kodak or Heidelberg APPE Rip technology also offers rendering integrity versus CTP output.



New options

Inline Finisher

- Enhanced saddle-stitching capabilities with max 30 sheets (80gsm).
- Support up to 350gsm.
- More robust finisher with non-stop operation.
- Increased stack capacity with dual shift trays (1000 sheets, 3500 sheets).



Air Assist Interposer

- Coated paper can be fed continuously by air assisted feeding from the leading edge.
- Support up to 350gsm.
- 2-trays 200 sheets per tray.



Plockmatic Long Sheet Booklet Maker 5000

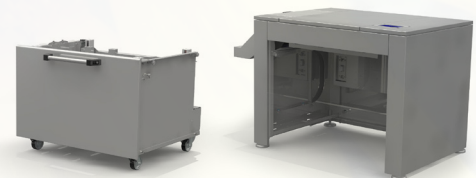
A long sheet booklet maker fully integrated with the Ricoh press.

- Enables A4 sized landscape booklets, professional 200 page (or 140 page) stapled or stitched and square folded booklets.
- Supports up to 350 gsm media coated or uncoated for a wide variety of applications.
- Available with stitch heads for heavy production sites.
- Exclusive features include square back and bleed trim capabilities.



BDT VX370-1280 Long Sheet LCT

- BDT vacuum-free Tornado technology for outstanding feeding and media separation.
- Media format range: Width: 210–364mm/Length: 210 –1280mm.
- Robust sheet metal design to accommodate a stack height of up to 500mm.



Ricoh Pro™ C9200 Series

SYSTEM SPECIFICATIONS

GENERAL

Model Name:	Pro C9200, Pro C9210
Technology:	4-drum dry electrostatic transfer system with internal transfer belt
Fusing:	Oil-less, belt fusing method
Print Speed:	Pro C9200 - 115ppm Pro C9210 - 135ppm
Resolution:	VCSEL 2400x4800dpi
Warm Up Time:	Less than 540 seconds
Dimensions (WxDxH):	2,520 x 990 x 1,500 mm
Weight:	Less than 1076Kg
Power Source:	220-240V, 32A x2 50/60Hz
Power Consumption:	Less than 9,000W
Life:	60,000,000 A4 pages or 5 years

MEDIA HANDLING

Paper Input Capacity:	1st Tray (std) 2200 sheets 2nd Tray (std) 2200 sheets
Optional:	Vacuum Feed LCT Tray 3: 2,200 sheets Tray 4: 2,200 sheets Tray 5: 2,200 sheets Tray 6: 2,200 sheets Tray 7: 2,200 sheets Tray 8: 2,200 sheets
Optional:	Bypass Tray 500 sheets
Paper Weights:	Tray 1: 52 - 470gsm Tray 2: 52 - 470gsm Tray 3: 52 - 470gsm Tray 4: 52 - 470gsm Tray 5: 52 - 400gsm Tray 6: 52 - 400gsm Tray 7: 52 - 400gsm Tray 8: 52 - 400gsm
Optional:	Vacuum Feed LCT Trays 3 - 4: 52 - 470gsm Trays 5 - 8: 52 - 400gsm
Maximum Media Thickness:	600µm
Optional:	Bypass Tray 52 - 216gsm
Duplex:	52 - 470gsm
Maximum Printable Area:	326 x 1255mm (when using optional banner sheet tray)

DIGITAL FRONT ENDS

E46

Configuration:	Optional: External
System Version:	Fiery System FS350 Pro
CPU:	Intel i5-6500 (3.2GHz up to 3.6GHz with Turbo)
Memory:	8GB (4GB x 2)
HDD:	1TB
CD-ROM Drive:	Supported DVD RW Drive
Operating System:	Windows 10 Enterprise Systems x64

E86

Configuration:	Optional: External
System Version:	Fiery System FS350 Pro
CPU:	Intel® Xeon® Gold 5118 processor, 2.3 GHz up to 3.2 GHz with Turbo
Memory:	32 GB RAM
HDD:	500GB + 2 x 2TB SATA RAID 0
CD-ROM Drive:	Supported DVD RW Drive
Operating System:	Windows 10 Enterprise Systems x64

TotalFlow Print Server R-62

Configuration:	Optional: External
CPU:	6th Gen Core i7 - 6700 3.4GHz
Memory:	Standard: 32GB (16GB x 2) Optional: 32GB (16GB x 2)
HDD:	Standard: 1TB SATA x 3 Optional: 1TB x 1
CD-ROM Drive:	Supported DVD Drive
Operating System:	Linux

Other Options

Vacuum Feed LCT (RT5120), Bridge Unit (BU5010), Cover Interposer (CI5040), Multi Bypass Tray (BY5020), Multi Bypass Banner Sheet Tray, Vacuum Feed Banner Tray, BDT Banner Sheet LCT (VX1280,370), Staple Finisher (SR5110), Booklet Finisher (SR5120), Front Edge Trimmer (TR5050), High Capacity Stacker (SK5040), High Capacity Interposer Tray (HCI3500), Ring Binder (RB5020), Perfect Binder (GB5010), Multi Folding Unit (FD5020), 2-4 Hole Punch units, GBC StreamPunch, GBC StreamWire, Plockmatic Long Sheet Booklet Maker (PBM5035/5035s), Plockmatic Booklet Maker (PBM350/500), Plockmatic PowerSquare Booklet Maker, Duplo Booklet Maker, Plockmatic Long Sheet Stacker (MPS)

Workflow Solutions

Ricoh TotalFlow Prep and Production Manager, Ricoh ProcessDirector, BatchBuilder, MarcomCentral, FusionPro VDP Suite, Ricoh Supervisor, InfoPrint Manager. EFI MarketDirect Storefront & Cross Media, Colour Profiler Suite, Graphic Arts Premium Package, Impose, Compose, OL Connect Suite: CGS ORIS Lynx & PressMatcher.

Please Note: Unless stated otherwise the data used in this brochure is based on A4 80gsm standard media.